

## FILTER DISC ELEMENTS

### Total Source For Filter Disc Filtration

Everest Equipments' Filtration Products offers a wide range of filtration products designed to meet the performance needs of polymer and fiber producers. Everest Equipments has a dedicated sales team of field experts in extrusion / polymer filtration ready to assist you with your screen pack requirements.

#### Single Layer Screen Pack



- ❖ Wire woven cloth available annealed or unsintered.
  - ◆ Plain steel mesh
  - ◆ Stainless steel wire woven cloth
  - ◆ Alloys available : Inconel®, Monel®, Hastelloy®
  - ◆ Other woven cloths in brass, copper, or galvanized steel
  - ◆ Wide variety of weaves.
- ❖ Punched to meet your size specifications.
- ❖ Available ratings range from 2 - 200 microns.
- ❖ Ultrasonic cleaning available for applications with cleanliness specifications.
- ❖ Packaged 25 – 50 parts in a poly pouch.
- ❖ Most common sizes in stock, fast delivery.

#### Multi-Layer Screen Packs (Weld Packs)

- ❖ Multiple layers of wire woven cloth spot welded together.
  - ◆ Plain steel mesh
  - ◆ Stainless steel wire woven cloth
  - ◆ Alloys available : Inconel®, Monel®, Hastelloy®
  - ◆ Other woven cloths in brass, copper, or galvanized steel
  - ◆ Wide variety of weaves.
- ❖ Available ratings range from 2 - 200 microns.
- ❖ Engineered lay ups to optimize performance to meet required flow rates, pack pressure, and specified filtration levels.
- ❖ Reversible packs to prevent improper installation.
- ❖ Sinter/Annealing available to control pore size.
- ❖ Color coding available for mesh identification.
- ❖ Punched to meet your size and shape specification.
- ❖ Ultrasonic cleaning available for applications with cleanliness specifications.
- ❖ Packaged 25 – 50 parts in a poly pouch.
- ❖ Most common sizes in stock, fast delivery.



# FILTRATION IS OUR BUSINESS !

## FILTER DISC ELEMENTS

### QUALITY PRODUCTS MADE SIMPLE

#### Framed Packs

- ❖ Multiple layers of wire woven cloth encapsulated in an aluminum binding.
  - ◆ Plain steel mesh
  - ◆ Stainless steel wire woven cloth
  - ◆ Alloys available : Inconel®, Monel®, Hastelloy®
  - ◆ Other woven cloths in brass, copper, or galvanized steel
- ❖ Wide variety of weaves.
- ❖ Banding material is available in a variety of thicknesses, band widths, and materials (stainless steel).
- ❖ Framed packs reduce changeout time due to easier and safer handling, and improved sealing.
- ❖ Rigid form helps control the flatness of the pack improving sealing and consistency of product.
- ❖ Sizes are compatible with OEM Screen Changers.
- ❖ Available ratings range from 2 - 200 microns.
- ❖ Color coding available for mesh identification.
- ❖ Reversible packs to prevent improper installation.
- ❖ Ultrasonic cleaning available for applications with cleanliness specifications.
- ❖ Packaged to customer specifications.
- ❖ Most common sizes in stock, fast delivery.



#### Extended Area Screen Packs



In addition to traditional flat screen packs, Everest Equipments manufactures extended area screen packs for applications where pack life is a primary consideration. These extended area screen packs are manufactured with multiple layers of precision woven wire cloth and/or non-woven fiber metal felt. This media is pleated to provide much more surface area than a flat screen pack. Media type, pleat height, and pleat spacing are determined after careful consultation with the user. Flow rate, viscosity, pressure drop and desired pack life are among the items that are typically considered.

Available ratings range from 2 - 200 microns for woven wire cloth and 3 - 75 microns for non-woven fiber metal felt.

- ❖ Increase in surface of 3 - 3.5X over flat screen
- ❖ Proven increases in pack life of 3x over flat screens
- ❖ Increased production because of fewer interruptions
- ❖ Reduced initial pressure drop
- ❖ Reduction of maintenance costs
- ❖ Ability to filter finer particles
- ❖ Improved product quality



## FILTER DISC ELEMENTS

### QUALITY PRODUCTS MADE SIMPLE

#### Polymer Leaf Disc Filters

Constructed from sintered wire cloth laminates or sintered non-woven fiber metal felt media, these polymer leaf disc filters are the product of choice for polymer film and specialty polymer producers. The unique design and configuration of the leaf disc assembly maximizes the effective filtration area while minimizing the residence time of the polymer itself, thereby reducing the risk of polymer degradation.

#### Features & Benefits

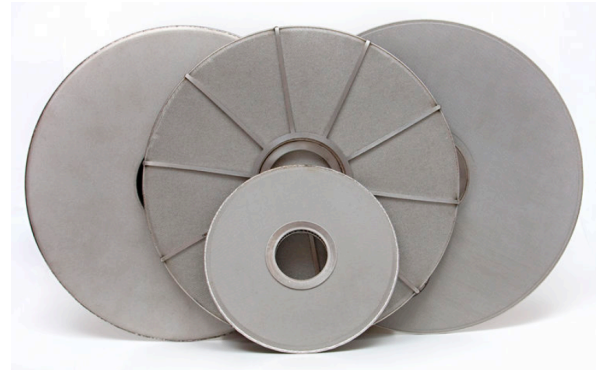
Fiber metal felt depth media are available from 3  $\mu\text{m}$  – 60  $\mu\text{m}$  absolute. Sintered wire cloth media is available from 10  $\mu\text{m}$  – 200  $\mu\text{m}$  absolute.

#### Materials/Method of Construction

Polymer leaf discs are available in 316L stainless steels and other alloys. These alloys, combined with our advanced construction/welding methods, result in excellent corrosion resistance and a useful life of many cycles.

#### Sizes & Center Hub Designs

- ♦ Standard diameters are 7", 10", and 12".
- ♦ Standard hub designs are hard, soft, and semi-hard.

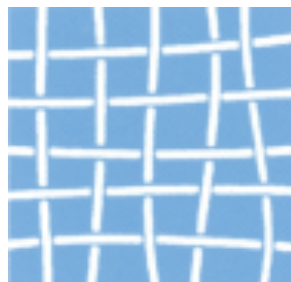


#### Sintered laminate Packs

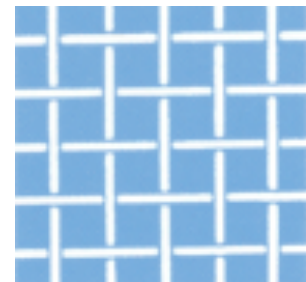


Sintered Laminate Packs are multi-layer composites of woven wire mesh and / or fiber metal felt. These media composites are diffusion-bonded for high-pressure polymer filtration applications.

Sintered screen packs are used in a variety of applications including polymer film, fiber and bulk resin filtration. In addition to standard discs and rectangular shapes, custom configurations such as conical screen packs are also available. Sintered screen packs are typically recommended for filtration ratings from 5  $\mu\text{m}$  to 40  $\mu\text{m}$ . Fiber metal felt media are typically included in screen packs rated at 5  $\mu\text{m}$  to 40  $\mu\text{m}$  as a means of enhancing gel retention or increasing screen pack onstream life.



Wires in typical screen packs can shift under pressure resulting in reduced filtration. (not sintered)



In sintered screen packs, each wire is permanently bonded in place at every contact point.

#### Everest Equipments International Co., Ltd

No.13-1, Xinguang Rd., Qianzhen Dist.,  
 Kaohsiung City 806, Taiwan  
 Tel : +886-7-536-6532 ✚ Fax : +886-7-536-6916  
[www.everest-equip.com](http://www.everest-equip.com)